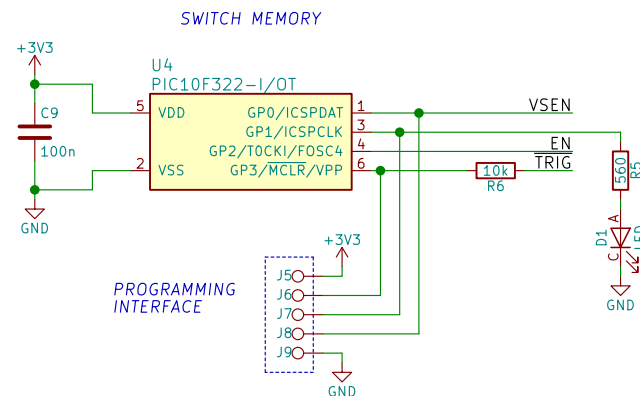
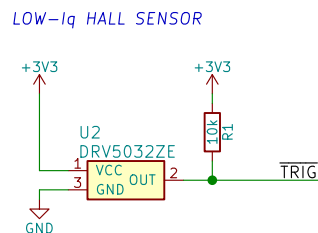
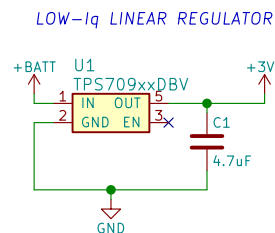
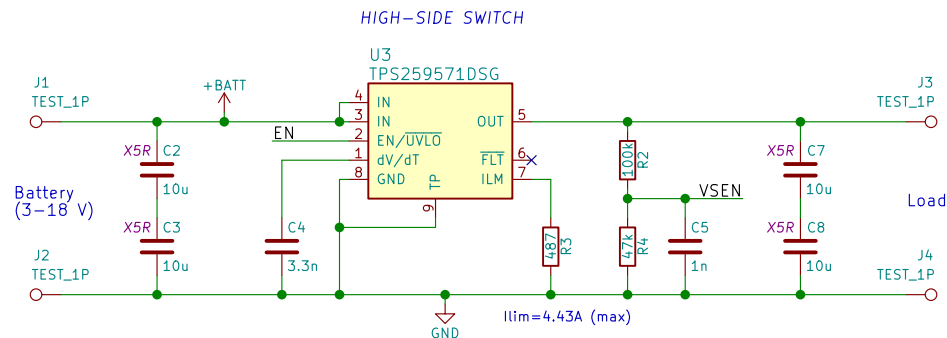


This documentation describes Open Hardware and is licensed under the CERN OHL v. 1.2 or later.

You may redistribute and modify this documentation under the terms of the CERN OHL v1.2. (<http://ohwr.org/cernohl>). This documentation is distributed WITHOUT ANY EXPRESS OR IMPLIED WARRANTY, INCLUDING OF MERCHANTABILITY, SATISFACTORY QUALITY AND FITNESS FOR A PARTICULAR PURPOSE. Please see the CERN OHL v1.2 for applicable conditions



- the series combination of input/output capacitors prevent a catastrophic failure when a single MLCC capacitor cracks
- all capacitors are X7R rated unless otherwise noted
- LED current is approximately 1mA. Adjust the resistor when needed.

Jiri Panacek 2019, jiri@panacek.net

File: magswitch-v2.sch

Title: Magnetic Switch for R/C Models – MagSW v20a

Size: A4	Date: 2019-02-19
KiCad E.D.A. kicad 5.0.2+dfsq1-1bpo9+1	

Rev: v2.0a

Id: 1/1